

Protein Models

Save time to set up your NMR experiments and use NMR-Bio samples of model proteins specifically labeled on methyl groups !

NMR-Bio proposes a select set of specifically labeled model proteins available with assignment and covering a wide range of molecular weights from 6 kDa to 0.5 MDa. Using its latest generation of precursors, **NMR-Bio** offers optimized $^{13}\text{CH}_3$ -labeled proteins characterized by high quality NMR spectra for your methodological developments.

Ubiquitin
9 kDa



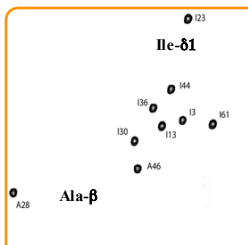
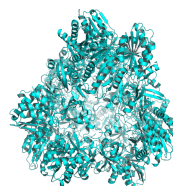
Maltose Binding Protein
42 kDa



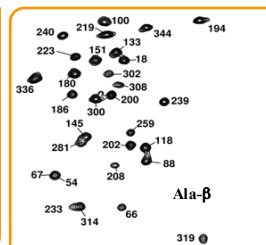
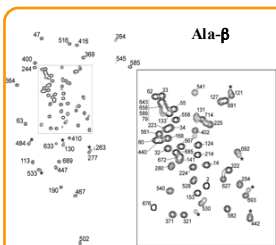
Malate Synthase G
81 kDa



TET-2
468 kDa



Proteins are provided in a lyophilized form or in sealed NMR tubes. Other labeling schemes are available upon request. Please contact us for more information:
sales@nmr-bio.com For other proteins please contact:
service@nmr-bio.com



Proteins	Example of labeling schemes	Prices
GB1 (minimum order 2 mg)	U-[^2H , ^{15}N] & [$^{13}\text{CH}_3$] - I- δ 1	450 € / 1 mg
Ubiquitin (minimum order 2 mg)	U-[^2H , ^{15}N] & [$^{13}\text{CH}_3$] - A- β / I- δ 1	540 € / 1 mg
Maltose Binding Protein (minimum order 5 mg)	U-[^2H] & [$^{13}\text{CH}_3$] - A- β / I- δ 1 / L proS / V proS	600 € / 1 mg
Malate Synthase G (minimum order 8 mg)	U-[^2H] & [$^{13}\text{CH}_3$] - A- β / I- δ 1 / L proS / M- ϵ / T- γ / V proS	750 € / 1 mg
	U-[^2H , ^{15}N] & [$^{13}\text{CHD}_2$] - L proS / V proS	500 € / 1 mg
	U-[^2H , ^{15}N] & [$^{13}\text{CHD}_2$] - A- β / I- δ 1 / L proS / V proS	700 € / 1 mg
	U-[^2H , ^{13}C , ^{15}N] & [$^{13}\text{CH}_3$] - A- β / I- δ 1 / L proS / V proS	800 € / 1 mg
TET2 - 12 x 39 kDa provided with assigned 2D methyl-TROSY spectra (minimum order 5 mg)	U-[^2H] & [$^{13}\text{CH}_3$] - A- β	800 € / 1 mg
	U-[^2H] & [$^{13}\text{CH}_3$] - I- δ 1 / V proS	750 € / 1 mg
	U-[^2H] & [$^{13}\text{CHD}_2$] - A- β / I- δ 1	950 € / 1 mg

The listed prices exclude shipping fees and importation tax. Discounts apply for larger quantities. For specific quote contact us at sales@nmr-bio.com

- ACADEMIC RESEARCH USE ONLY-
For industrial research please contact service@nmr-bio.com